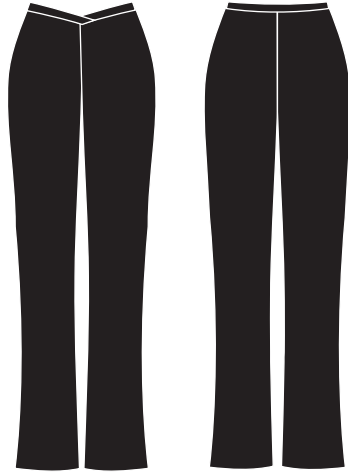
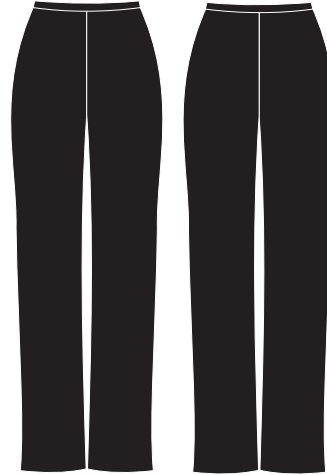


555 - Form Fitted, Boot Cut



540 - Medium Fit



565 - Looser Fit



575 Legging



565 Capri

Pants and capris available in the following waist styles:



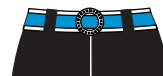
V Band



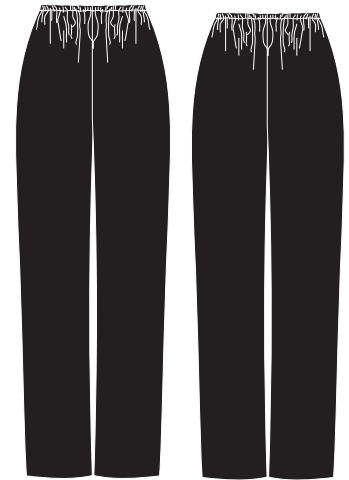
Straight Band



Cinch Band



Faux Belt



556 Gathered Pants

Pants also available in triangle or striped leg:



507 V Band



577-8
Classic Shorts with Looser Leg



577-6 Belted



577-6V BD
Fuller Cut Leg



507-1
Form Fitted Leg



507-1A
Higher Cut Shaped Leg



507-1A Drawstring



577-6 Lace



102 V Band